



6-Axis Robotic Platform

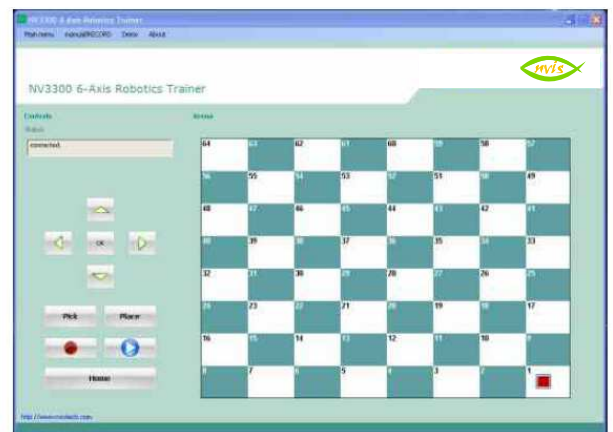
Nvis 3300



Nvis 3300 6-Axis Robotics Platform is versatile training equipment, not only for Mechatronics students but also for all Robotics enthusiasts to understand the very basic concept of Robotics i.e. study of axis motions. To make it simple we have provided a programmable Robotic ARM with an interactive front panel. Accompanied software demonstrates complete functioning of Platform as well as allows user to develop their own programs.

Features

- Study of Stepper motor and Servo motor
- Study of Sensors
- Each axis can be controlled individually
- Ideal to understand basics of CNC machine
- Can be operated from 8 bit microcontroller to ARM processors
- Can be controlled from computer
- Programmable tasks
- Record and Play capability
- Optional interfacing with PLC
- Ample work area
- Touch operated ON/OFF switch
- Auto set to home position
- User can develop own applications
- Self-contained and easy to operate
- Data acquisition using USB
- User friendly software
- Exhaustive course material & references
- Online Product Tutorial



Software Window



6-Axis Robotic Platform

Nvis 3300



Technical Specifications

Work Area (mm)	: 400 x 400
Gripper AOF	: 180°
Gripper Payload	: 250g
Stepper Motors	: 3 nos.
Servo Motors	: 4 nos.
IR Switches	: 2 nos.

Stepper Motor Specifications

Type	: 6 wire, Unipolar
Step Angle	: 1.8°
Holding Torque	: 4.1kg cm
Operating Voltage	: 5V

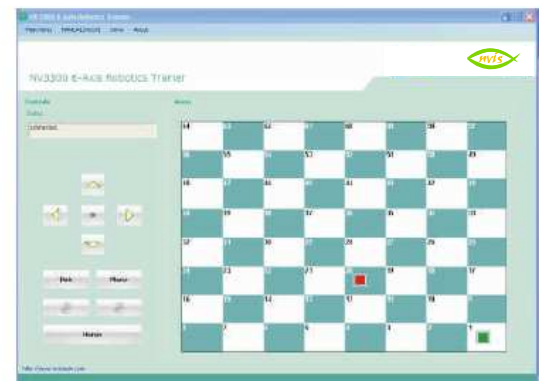
Servo Motor Specifications

Control System	: PWM 1520 μ sec Neutral
Stall Torque	: 3.2kg cm
Operating Voltage	: 5V
Sensor	: IR as Limit Switch

Drive type

X & Y Axis	: Belt Driven – 2 Axis
Z Axis	: Servo Motor Driven – 4 Axis

Mains Supply	: 90-275V, 50Hz
Dimensions (mm)	: W 610 x H 500 x D 490
Weight	: 7kg (approx)
Power Supply	: 230 V \pm 10%, 50 Hz



Software Window



Subject to Change

Designed and Manufactured in India by -

Nvis Technologies Pvt. Ltd.

141-A, Electronic Complex, Pardesipura, Indore-452010, India.

© +91-731-4211500, ✉ info@nvistech.com, 🌐 www.NvisTech.com

