



Electrical Data Acquisition System

Nvis 7070A



Nvis 7070A offers three AC voltage channels, three AC current channels, two DC voltage channels, two DC current channels, speed and torque measurement through wireless. Additionally, it also provides the measurement of any 3-phase electrical system simultaneously without using individual meters. It is a compact table top unit. In this instrument we have provided a range of indicators and buzzers for AC/DC voltage, AC/DC current, speed and torque parameters. It also has a light indication for running channel. It includes signal processing required to perform Voltage, Current, Frequency, Active Power, Reactive Power, Apparent Power and Power Factor measurements.

This product is suitable to measure active, reactive, and apparent energy in various 3-phase configurations. It is Compatible with 3-phase/4-wire systems. All the measured parameters are displayed on the PC software provided with this product.

Features

- **Singe Phase Parameters Measurement**
 - 3 AC Voltage channels
 - 3 AC Current channels
 - Corresponding Active power, Reactive power, Apparent power, Frequency, Power factor and Angle
 - 2 DC voltage channels
 - 2 DC current channels
- **Three Phase Parameters Measurement**
 - Line to Neutral Voltage
 - Line to Line Voltage
 - Line Current
 - Active Power
 - Reactive Power
 - Apparent Power
 - Frequency
 - Power Factor
- Curve can be plotted between any two parameters
Store curve reading for further study
- Microcontroller based Accurate & Reliable design
Wireless connectivity to PC
- CT is used as current transducer
- Fully isolated measurement



Speed Measurement Unit (Optional)



Electrical Data Acquisition System

Nvis 7070A

Technical Specifications

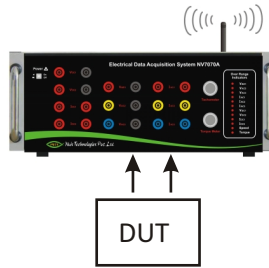
AC Voltage Range	: 25-450Vrms, Accuracy $\pm 5\%$
AC Current Range	: 0.20-10Amp, Accuracy $\pm 5\%$
DC Voltage Range	: 25-300Vrms, Accuracy $\pm 5\%$
DC Current Range	: 0.20-10Amp, Accuracy $\pm 5\%$
Frequency	: 45-55Hz, Accuracy $\pm 3\%$
Active power	: 50-3000Watts, Accuracy $\pm 7.5\%$
Reactive power	: 50-3000Watts, Accuracy $\pm 7.5\%$
Apparent power	: 50-3000Watts, Accuracy $\pm 7.55\%$
Power Factor	: 0.30 to 0.99 both Lead & Lag Accuracy $\pm 3^\circ$ Electrical
Speed	: Up to 2500 RPM, Accuracy $\pm 5\%$
Torque	: 0 - 25 N-m, Accuracy $\pm 10\%$
Auxiliary Supply	: 230V AC $\pm 10\%$, 50Hz

Following products are compatible with Nvis 7070A Electrical Data Acquisition System

Nvis 7006	Three Phase Induction Motor Trainer
Nvis 7007	DC Machine Lab I
Nvis 7008	DC Machine Lab II
Nvis 7013	Three Phase Synchronous Motor Lab
Nvis 7014	DC Series Motor Lab
Nvis 7015	Single Phase Induction Motor Lab
Nvis 7017	Three Phase Synchronous Generator Lab
Nvis 7021	Shunt Motor Series Generator Lab
Nvis 7023	DC Compound Motor Lab
Nvis 7027	Induction Motor Compound Generator Lab
Nvis 7031	Compound Motor Compound Generator Lab
Nvis 7033	Slip Ring Induction Motor Lab
Nvis 7034	Swinburn's Test of DC Machine

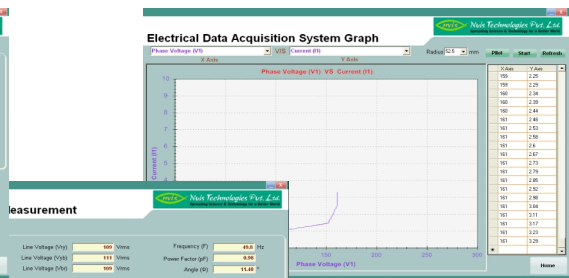
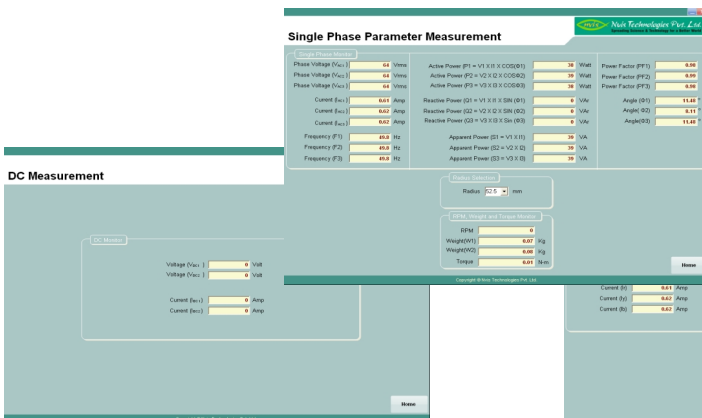
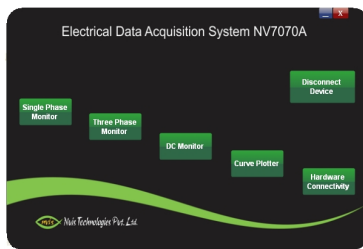


PC connectivity with module



Torque Measurement Unit (Optional)

Software Windows



Designed & Manufactured in India by

Nvis Technologies Pvt. Ltd.

141-A, Electronic Complex, Pardesipura, Indore-452010, India.

© +91-731-4211500, info@nvistech.com, www.NvisTech.com