



# Solar PV Module Analyzer

Nvis 6005S



Solar PV module analyzer is used to study the performance of Solar PV modules and to draw its VI characteristics

## Features

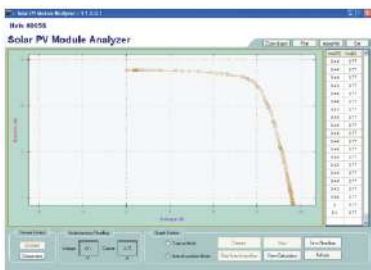
- Instrument to determine characteristics of Solar PV modules
- Microcontroller based design
- RS232 connectivity
- 16 x 2 LCD
- Mains and Battery operation
- User interactive software

## Applications

- Quality Control in the Production of PV Modules
- Identification of Solar Power System requirements
- Maintenance of Solar Panels
- For verifying best installation angle of Solar Panels
- Useful at installation sites

## Technical Specifications

<b>Power Supply</b>	: +5V DC
<b>DC Voltage Range</b>	: 0-50V
<b>DC Current Range</b>	: 10A
<b>Measurement</b>	
Max. Voltage(V)	: at $P_{max}$
Max. Current(I)	: at $P_{max}$
Voltage at Open Circuit	: $V_{oc}$
Current at Short Circuit	: $I_{sc}$
Instant Power	: W
<b>Battery</b>	: 9V
<b>Dimension (mm)</b>	: L 170 x B 93 x H 35
<b>Weight</b>	: 500gms (approximate)



V-I curve of Solar PV module

Designed & Manufactured in India by

**Nvis Technologies Pvt. Ltd.**

141-A, Electronic Complex, Pardesipura, Indore-452010, India.

© +91-731-4211500, ✉ info@nvistech.com, 🌐 www.NvisTech.com